

Background and Aims

- Migraines may become increasingly frequent and disabling if not identified and appropriately treated soon after they first develop in children, and school nurses frequently are the first healthcare provider to encounter children with migraines
- *Project Aim:* To determine the extent to which targeted migraine education for school nurses and primary care providers, supplemented with user-friendly online education and treatment resource, facilitates systematic improvement in community-based migraine management

Procedure

- Continuing education on migraine identification and use of web-based management resources developed for this project were provided to school nurses in local school districts, who then referred students they saw in their offices with headaches to a dedicated project website (www.headachereliefguide.com)
- Continuing medical education on migraine management was provided to primary care providers serving targeted school districts, along with guidance on using an online treatment decision support tool developed for this project
- The impact on migraine care was evaluated by tracking medication prescription patterns, healthcare utilization, and headache-related disability

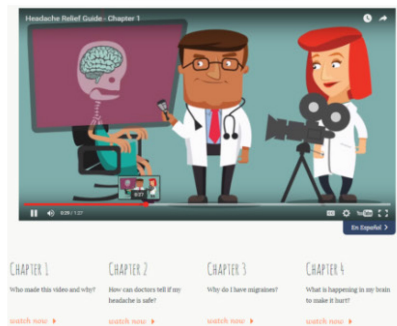
Project Website Overview

www.headachereliefguide.com

Provider portal for step-by-step migraine management recommendations and printouts



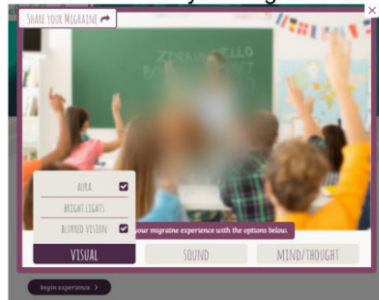
Educational videos



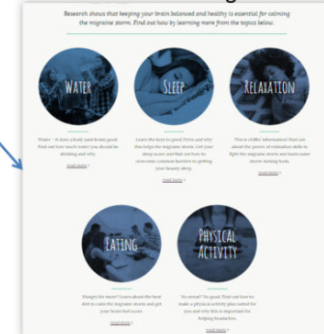
Guidance to prepare for PCP eval



Show/share what your migraine is like

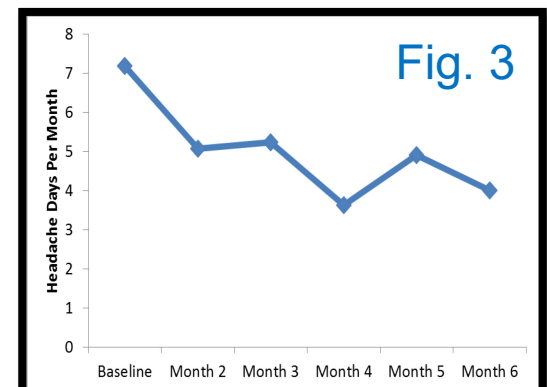
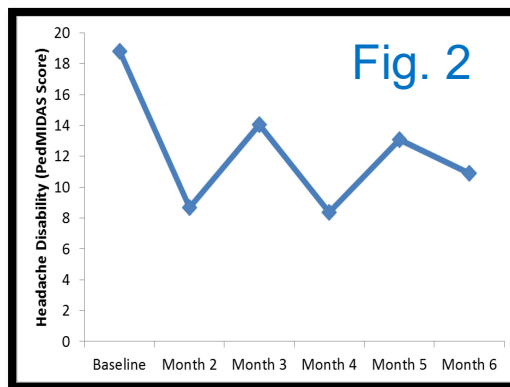
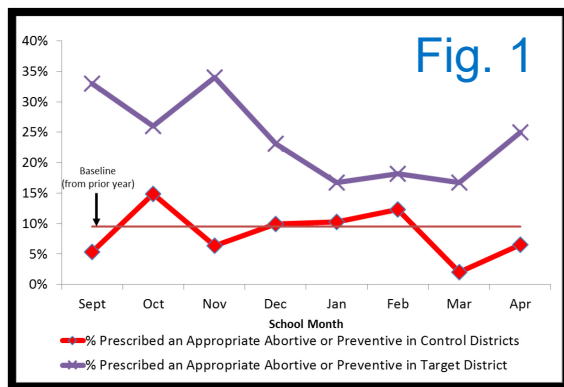


Interactive self-management tools



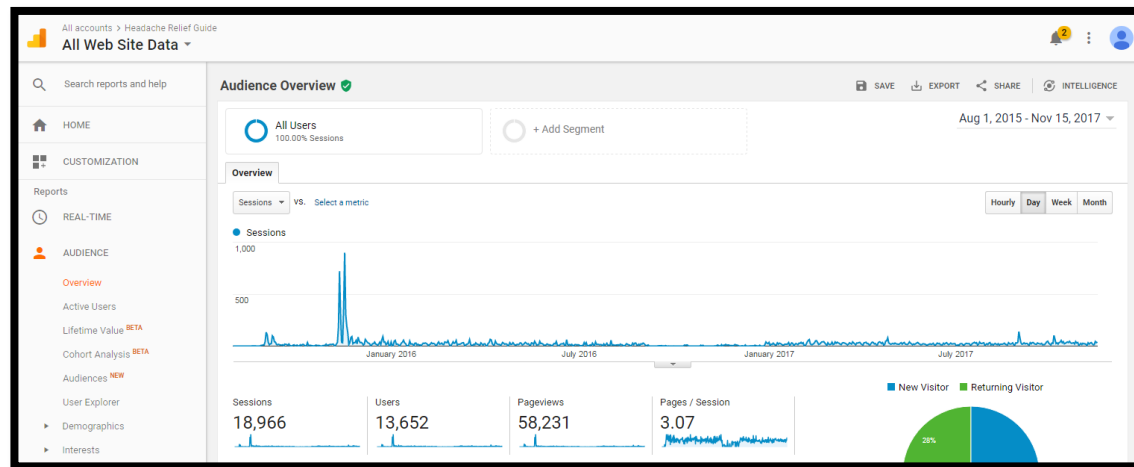
Results

- Prescriptions of appropriate migraine preventive/abortive medications increased and inappropriate prescriptions significantly decreased in the targeted region (Fig 1)
- Headache frequency, intensity, and disability significantly improved since baseline for students in the targeted region that consented to complete prospective surveys about their headaches (Fig 2 & 3)



Results and Conclusions

- Online resources developed for the project were widely accessed



- Conclusion:* A combination of school nurse partnership, provider and patient education, and access of providers to an easy to follow online migraine management decision tool appears to help optimize care of pediatric migraine in the community